

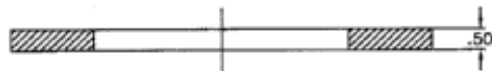
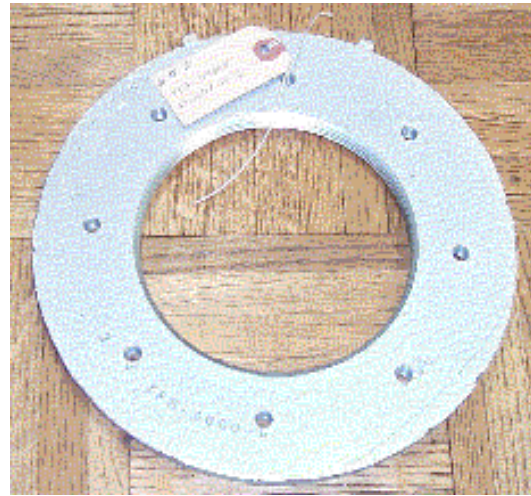
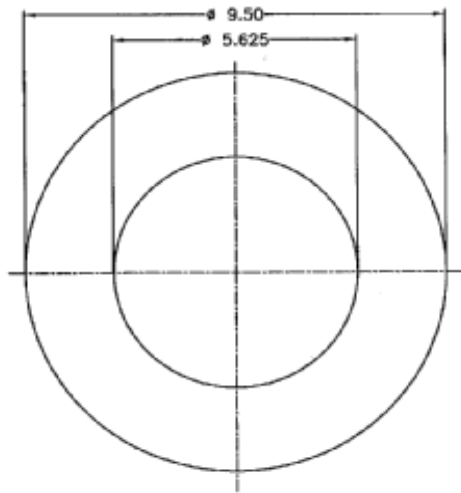
Flanges & Fittings in Heat & Corrosion Resistant Stainless Steels

Tank Fitting Adapter-Body
in corrosion resistant stainless steel alloy type SS 316

Top view (above), side view (right),
Thread Profile (right inset)

Tank Fitting Adapter – Body

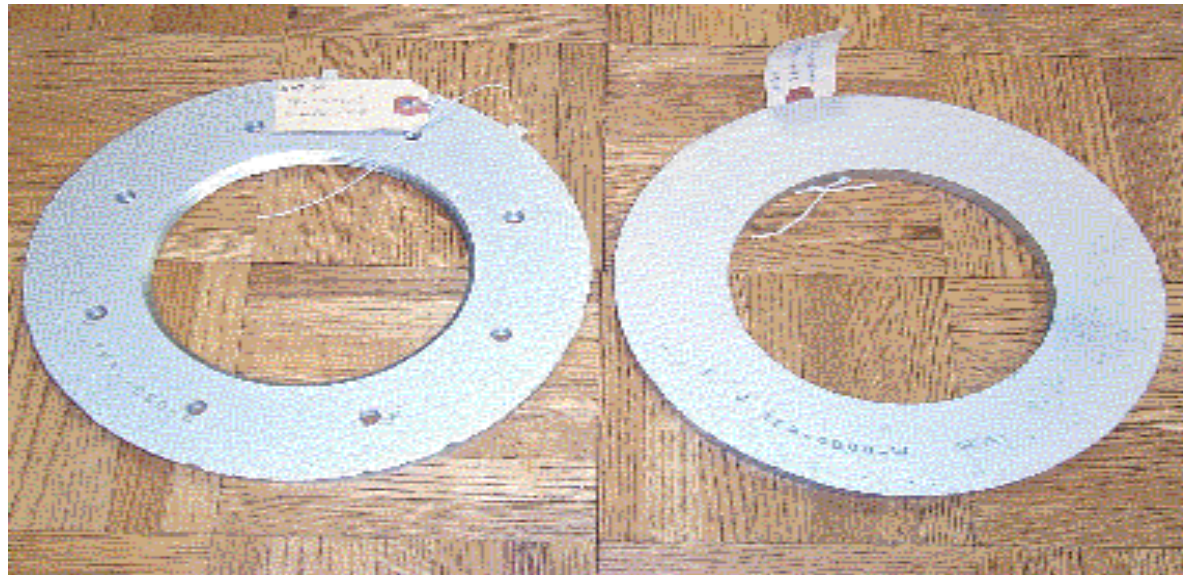
WH-76 Mayapuri Industrial Area Phase-I New Delhi – 110 064 India
Phone: +91-11-513 3021, 514 3474 Fax: +91-11-540 5799, 514 6900 e-mail: contact@acmealloys.com Website: http://www.acmealloys.com

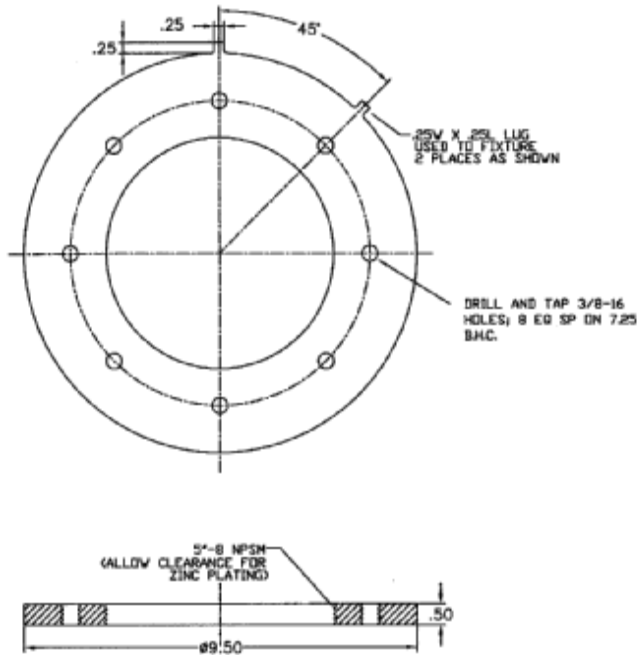


**Tank Fitting Adapter
– Washer**

In corrosion resistant stainless steel alloy SS 304 at the top right, and in heat resistant stainless steel type SS 310 at the bottom right.

Front and back views shown.





Tank Fitting Adapter – Compression Ring

Tank Fitting Adapter (Assembly) - Body, Compression Ring and Washer

Alloys commonly used for Flanges & Fittings include equivalents of wrought alloy type AISI – 302, 303Se, 304, 310, 316, 317, 340, 347, 410, 420, 422, 442, 446
 Proprietary Alloys that are trademark of the respective companies include Hastelloy-B, C, D; Nitronic - 50, Nitronic - 60, Alloy-20, Y-17, R-55, Monel - 400, Monel - 600

Alloys: Standard and Non-Standard Corrosion & Heat Resistant Alloys

For example, ASTM/ACI- 743, 744, 351/DIN/BIS cast equivalents of

- Standard Wrought Martensitic Stainless Steel Alloy Type AISI- 403, 410, 414, 416, 416Se, 420, 420F, 422, 431, 440A, 440B, 440C
- Standard Wrought Austenitic Stainless Steel Alloy Type AISI- 201, 202, 205, 301, 302, 302B, 303, 303Se, 304, 305, 308, 309, 310, 314, 316, 317, 321, 330, 347, 348, 384
- Heat Resistant Alloys Type ACI - HA, HC, HD, HE, HF, HH, HI, HK, HL, HN, HP, HT, HU, HW, HX

Acme Alloys™ Private Limited is a 100% export business division of parent company, AcmeCast™ which is providing engineered casting solutions since 1980.